

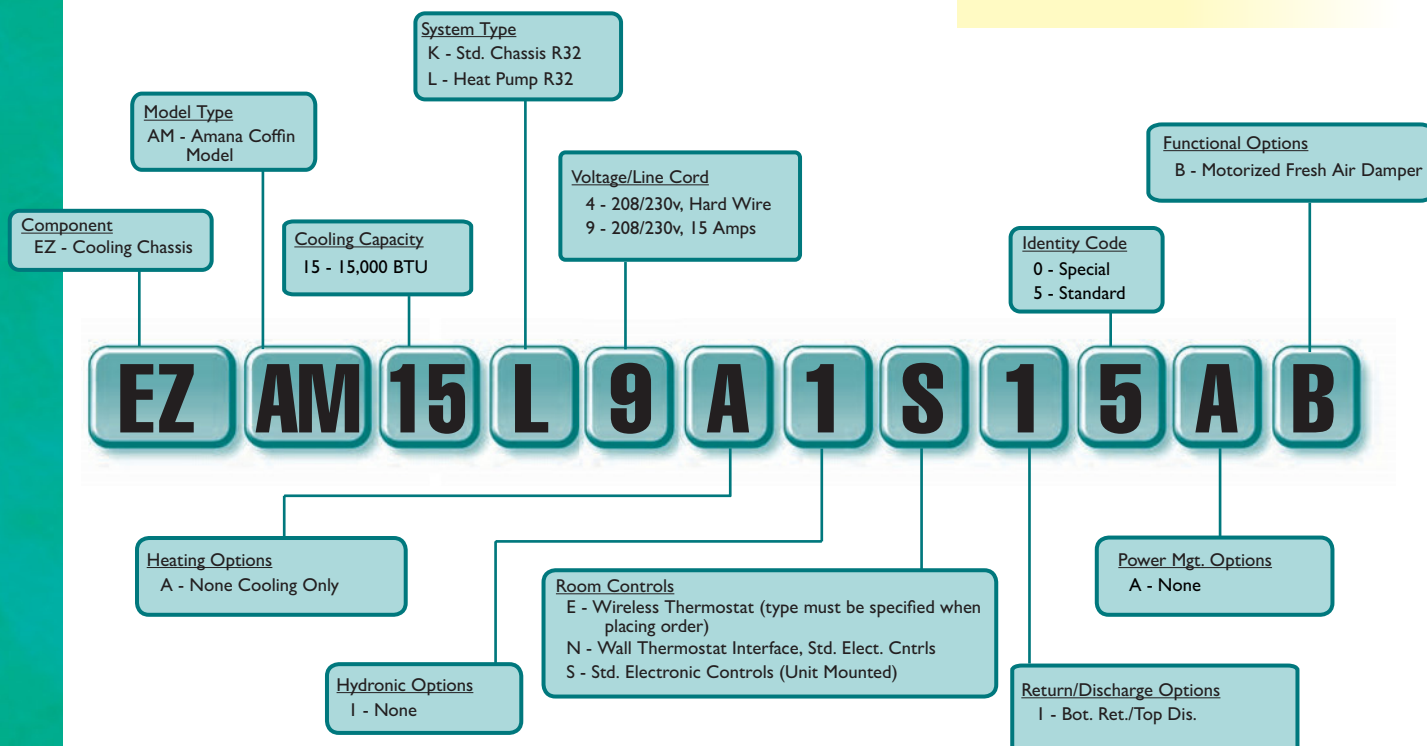
Replacement for the Amana Coffin Unit

Islandaire EZAM Series is a replacement for the Amana Coffin units. Our commercial duty construction with heavy gauge galvanized steel and superior components create an efficient, reliable unit. This design eliminates the need for any interior or exterior renovation. Use of the existing wall sleeve-cabinet and louver saves time and money, two very important factors in today's competitive environment! If the need does occur where the wall sleeve-cabinet and/or louver needs to be replaced, we manufacture these accessories as well.



FEATURES

- Proudly Assembled in the U.S.A.
- ETL listed products
- Superior Energy Efficiency Ratios (EERs)
- Commercial Duty Construction with Heavy Gauge Galvanized Steel
- Designed for exact replacement of existing sleeve opening
- Energy Efficient Rotary Compressors
- P.S.C. Evaporator and Condenser Motors
- High-Efficiency Refrigeration Coils Used to Provide Superior Heat Transfer
- Units Available as Heat Pump and Cooling only
- Custom Options Available
- Available with wired and wireless wall thermostats
- NYC MEA Number 358-93-E Vol. II



*Specifications are subject to change due to ongoing product development.



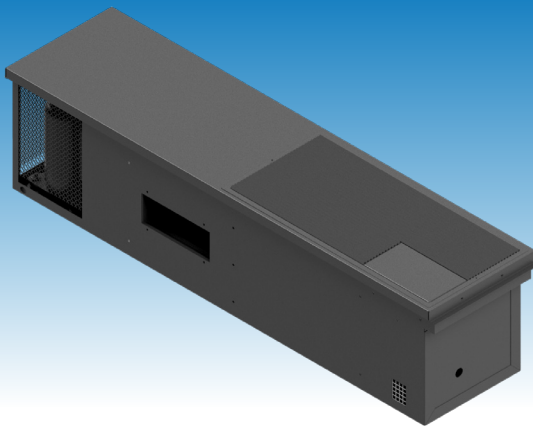
Scan for more information

6140545 Rev. - (03/05/25)

500 Middle Country Road, St. James, NY 11780 • 1-800-886-2759

e-mail: sales@islandaire.com • www.islandaire.com

Ph: 631-471-2900 • Fax: 631-471-2913



Accessories:

Please contact your customer representative

MODELS

EZ15

VOLTS	208 / 230
COOLING BTUH	15,000 / 15,000
COOLING AMPS	6.90 / 6.90
COOLING WATTS	1,575 / 1,575
EER	9.5 / 9.5
HEAT BTU	13,300 / 13,300
HEAT AMPS	5.70 / 5.70
HEAT WATTS	1,300 / 1,300
COP	3.0 / 3.0
CFM HIGH ⁽¹⁾	390
CFM LOW ⁽¹⁾	350
SOUND LEVEL (dBA) ⁽²⁾	N/A
WEIGHT (LB)	113

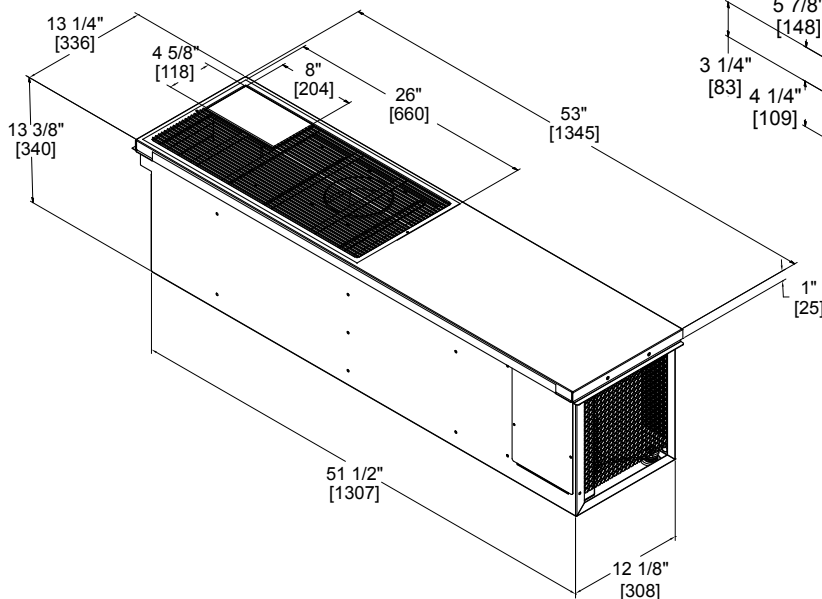
⁽¹⁾ CFM values are dry coil (not in cooling mode).

⁽²⁾ Sound values represent sound pressure levels.

Where applicable, cooling capacities are specified at conditions of 95 °F DB/75 °F WB (35 °C DB/24 °C WB) outdoor and 80 °F DB/67 °F WB (27 °C DB/19 °C WB) indoor and heating capacities are specified at conditions of 47 °F DB/43 °F WB (8 °C DB/6 °C WB) outdoor and 70 °F DB/60 °F WB (21 °C DB/16 °C WB) indoor in accordance with AHRI 310/380 and CSA C744 standards. Wattage, Amperage, EER, and COP listings include compressor, evaporator motor and condenser fan motor. The above ratings are a typical heat pump style unit.

Line Voltage	Maximum Amperage	Wall Socket Configuration	Receptacle Number	Electrical Heat Options
208/230	12		NEMA 6-15R	2.5

FRONT VIEW



REAR VIEW

