



MANUFACTURER OF QUALITY AIR CONDITIONING  
AND HEATING PRODUCTS

## ISLANDAIRE. . .

Our Engineering, Production, Sales and Customer Service departments have been fully integrated to provide the maximum degree of user satisfaction. This team approach to manufacturing produces a superior overall product and is the basis of our unique optional warranty providing coverage up to 5 years. It also assures a large degree of flexibility in design and production scheduling to meet tight prototyping or construction timetables.



## PRECISION-BUILT TO MEET OR EXCEED ORIGINAL EXPECTATIONS

Located in our modern manufacturing facility, Islandaire builds a full complement of high quality thru-wall replacement air conditioners and heat pumps, water source heat pumps and gas fired heating units. Each model fits perfectly into the existing original wall sleeve assembly thereby saving both time and money during installations. Once installed, Islandaire cooling and heating units deliver dependable service at reduced operating costs.



A partial view of our multi-station production line.

Our 75,000 square foot headquarters and manufacturing facility.





# AIR CONDITIONERS AND HEAT PUMPS

EZ SERIES

16

Replacement for the American Air Filter Series 16 (Models WY & YY).



EZ SERIES

45

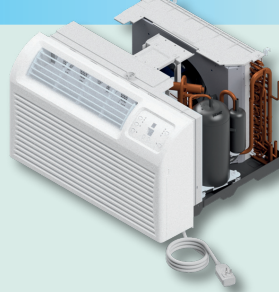
Replacement for the American Standard, Carteret, Remington, and Singer Type 45.



EZ SERIES

26

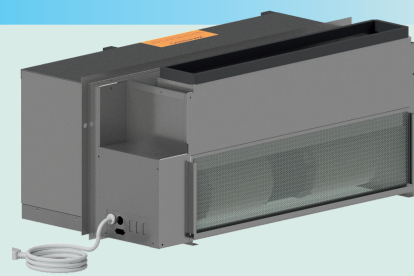
Replacement for 26" x 16" unit for Amana, Friedrich, GE, LG and Sanyo.



EZ SERIES

AD

Replacement for the Friedrich Climate Master and Weil-McLain Series 700AD.



EZ SERIES

41

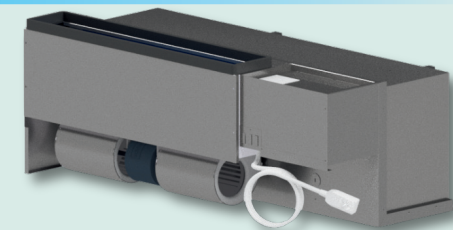
Replacement for the Singer, Remington, and American Standard TW Series Type 41 Remotaire.



EZ SERIES

CH

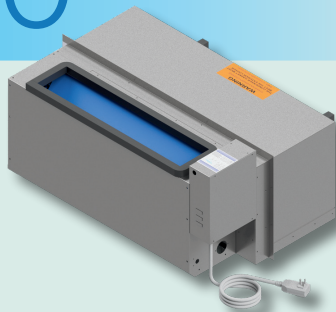
Replacement for Chromalox upflow and downflow.



EZ SERIES

40

Replacement for the American Standard Type SR 40.



EZ SERIES

CM

Replacement for the Friedrich Climate Master and Weil-McLain Series 702, 703, & 704.



EZ SERIES

42

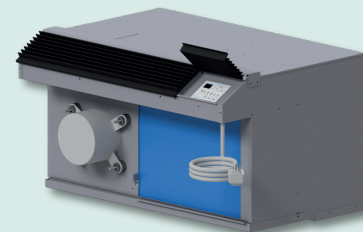
Replacement for 42" x 16" unit for Amana, Carrier, Comfortaire, Friedrich, GE, Gree, LG, McQuay, Remington, Sanyo.



EZ SERIES

CS

Replacement for the Carrier 51PH Wallmate, Keeprite Seasonall, Heil Quaker Series C, Applied Comfort, and Zoneaire CSM & CHP Series.



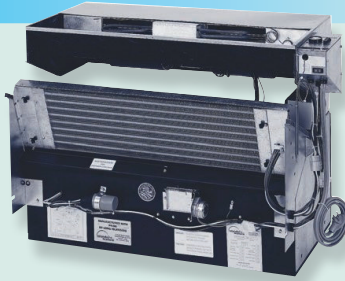
Consult our detailed cross-reference chart to see which Islandaire model fits your needs.

# AIR CONDITIONERS AND HEAT PUMPS

EZ SERIES

**CX**

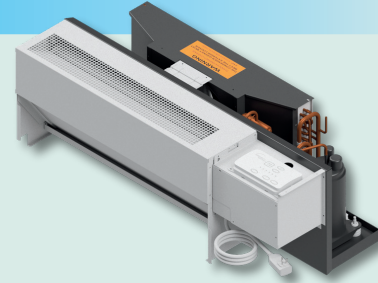
Replacement for Chromalox.



EZ SERIES

**ED**

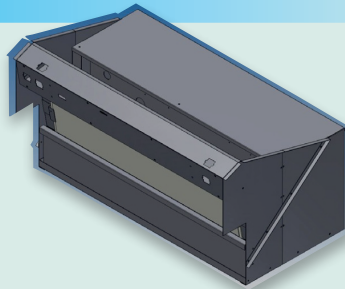
Replacement for the Remington, Singer, and McQuay Type EA/ES/RS.



EZ SERIES

**CY**

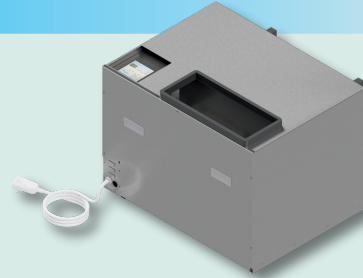
Replacement for the Chrysler/ITT Nesbitt Roomate units.



EZ SERIES

**FM**

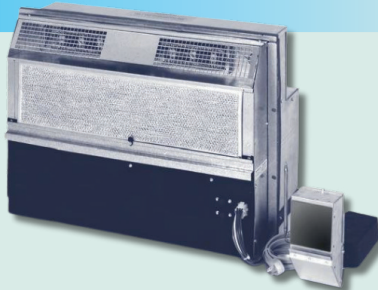
Replacement for the Slant Fin Monterey unit.



EZ SERIES

**EB**

Replacement for the Singer and McQuay models of EB units.



EZ SERIES

**GE**

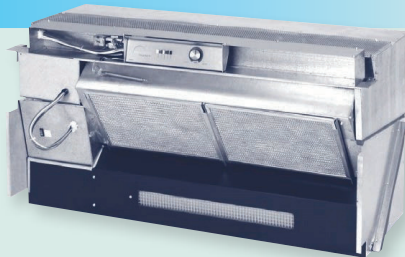
Replacement for the General Electric flat-top units.



EZ SERIES

**EC**

Replacement for the McQuay and Singer C/EC.



EZ SERIES

**HQ**

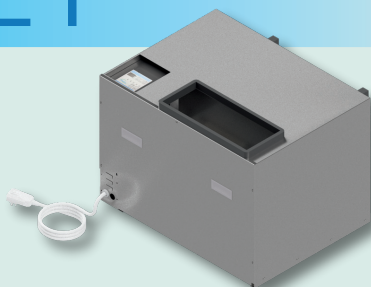
Replacement for the Heil Quaker SEA and SHA.



EZ SERIES

**ET**

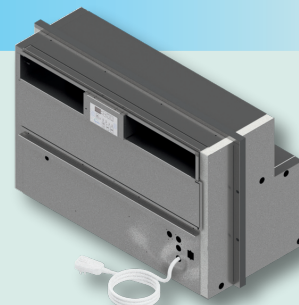
Replacement for the Friedrich model of ET units.



EZ SERIES

**IT**

Replacement for the Integrity unit.



Consult our detailed cross-reference chart to see which Islandaire model fits your needs.



# AIR CONDITIONERS AND HEAT PUMPS

EZ SERIES

JA

Replacement for the Remington and Singer J/EJ.



EZ SERIES

LT

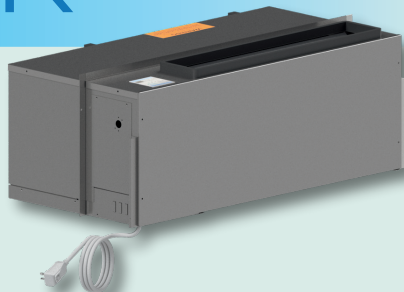
Replacement for any 42" by 16" sleeve and New Construction Projects.



EZ SERIES

JK

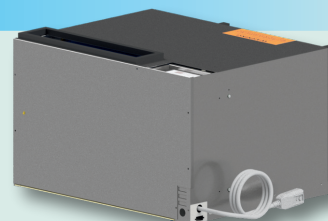
Replacement for the Slant fin JK upflow and downflow.



EZ SERIES

MX

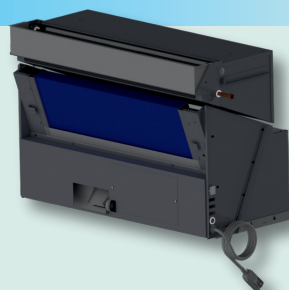
Replacement for the Fedders Maxizone.



EZ SERIES

KF

Replacement for the Remington, Singer, and McQuay K.



EZ SERIES

N3

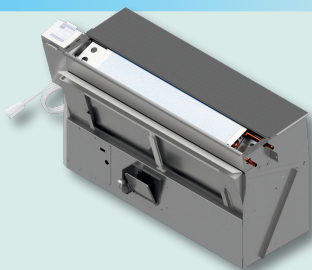
Replacement for the Dunham Bush Newport III and Newport IV.



EZ SERIES

KG

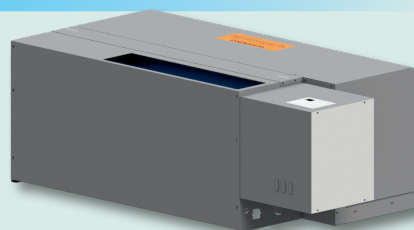
Replacement for the Remington, Singer and McQuay models of KG & EKG units.



EZ SERIES

NC

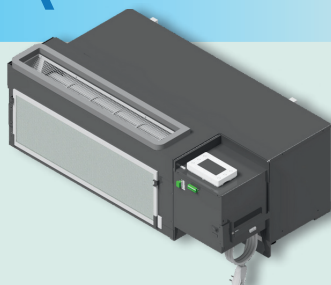
Replacement for the ITT Nesbitt Challenger.



EZ SERIES

LA

"Low Ambient" Series is our 42" x 16", new construction PTHP.



EZ SERIES

NE

Replacement for McQuay NE.



Consult our detailed cross-reference chart to see which Islandaire model fits your needs.

# AIR CONDITIONERS AND HEAT PUMPS

EZ SERIES

## NR

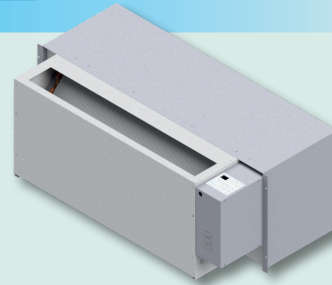
Replacement for the Nesbitt Modular RoomMate.



EZ SERIES

## RB

Replacement for the Westinghouse RB.



EZ SERIES

## NU

Replacement for the Ice-Air NU.



EZ SERIES

## RK

Replacement for the Ice-Cap RSK.



EZ SERIES

## NY

Replacement for the McQuay PDNS and new construction.



EZ SERIES

## RM

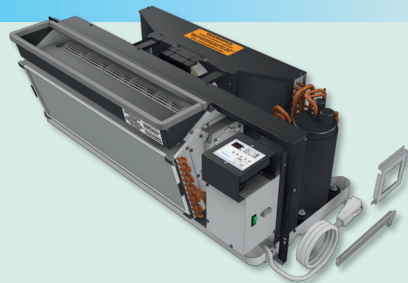
Replacement for the Embassy Weathertwin, TPI Ra-Matic, Cool Heat, and Zoneaire RM & SC Series.



EZ SERIES

## PD

Replacement for the McQuay PDNS.



EZ SERIES

## RT

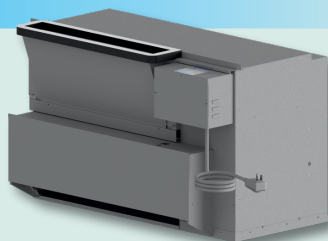
Replacement for the Ice-Cap RSCT Series.



EZ SERIES

## PT

Replacement for the Lennox PTEIA.



EZ SERIES

## SC

Replacement for the Zoneaire model SC units.



Consult our detailed cross-reference chart to see which Islandaire model fits your needs.



# AIR CONDITIONERS AND HEAT PUMPS

EZ SERIES

## TE

Replacement for the Friedrich and Zoneaire T units.



EZ SERIES

## UN

Replacement for the Fedders Unizone, Mueller Climatrol, and Worthington.



EZ SERIES

NATURAL AND LP GAS HEAT WITH ELECTRIC COOLING

## GS

Gas unit specifically designed for the 42" x 16" market.



EZ SERIES

## WL

Replacement for the Ice-Cap WL unit.



EZ SERIES

INVERTER HEAT PUMP WITH DR. VTAC ADD ON OPTION

## VV

Replacement for GE AZ Vertical, Friedrich Vert-I-Pak and First Company SPX Vertical, and new construction.



**DR. + VTAC**  
THE CURE FOR UNCONDITIONED MAKE-UP AIR™

EZ SERIES

NEW CONCEPT MONOBLOCK

## MB

39.4" x 23.1"  
Monoblock (no external unit) air conditioner.



# WATER SOURCE HEAT PUMPS

Water Source Heat Pump units are designed for year round heating and cooling of both new and renovated commercial, industrial and multi-family buildings. They offer low initial costs, individual comfort and highly economic year round operation.

A typical system includes heat rejection equipment. This heat source maintains a required range of inlet water temperature for these units.

A non-insulated two pipe continuous loop system carries moderate temperature

water to and from each unit. All units function independently either adding or removing heat from the water loop. This provides separate zone control and ensures maximum efficiency.

These units are designed for new construction projects and replacement projects for existing Climate Master, Cool Heat, Electro Hydronic, McQuay, Singer and Water Furnace units.

EZ SERIES

## V7

Replacement for Climate Master 816 and 817 WSHPs with 180° bend water inlet/outlet pipe orientation and new construction.



EZ SERIES

## EH

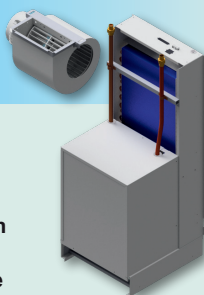
Replacement for Singer/McQuay HC/EH and Electro Hydronic Units.



EZ SERIES

## V8

Replacement for Climate Master 816 and California Heat Pump CHP-RF with water supply & return connections situated on the top side of the unit.



EZ SERIES

## HW

Replacement for American Air Filter/Enercon "HW & HP" Series, Singer CC.



EZ SERIES

## 81

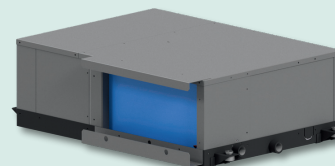
Replacement for Climate Master 801 Series.



EZ SERIES

## HZ

Replacement for ceiling hung WSHPs and new construction.



EZ SERIES

## 8S

Replacement for Climate Master 801 Small Series.



EZ SERIES

## LC

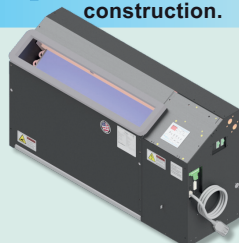
Replacement for the McQuay LC Console Water Source Heat Pump.



EZ SERIES

## AV

Replacement of the console McQuay, Trane, Water Furnace, and new construction.



EZ SERIES

## LM

Replacement for McQuay and Singer Water Source Heat Pumps.



Consult our detailed cross-reference chart to see which Islandaire model fits your needs.



# WATER SOURCE HEAT PUMPS

Water Source Heat Pump units are designed for year round heating and cooling of both new and renovated commercial, industrial and multi-family buildings. They offer low initial costs, individual comfort and highly economic year round operation.

A typical system includes heat rejection equipment. This heat source maintains a required range of inlet water temperature for these units.

A non-insulated two pipe continuous loop system carries moderate temperature

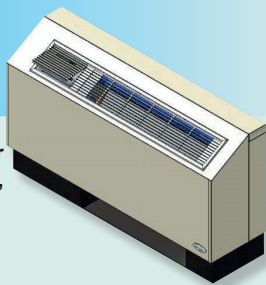
water to and from each unit. All units function independently either adding or removing heat from the water loop. This provides separate zone control and ensures maximum efficiency.

These units are designed for new construction projects and replacement projects for existing Climate Master, Cool Heat, Electro Hydronic, McQuay, Singer and Water Furnace units.

EZ SERIES

## LR

Replacement for McQuay, Singer, WaterFurnace Console WSHP and new construction.



EZ SERIES

## VX

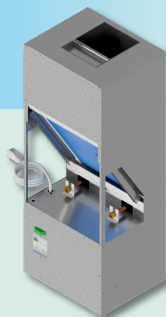
Replacement for the Ice Air Vertical Stack Hybrid Water Cooled Air Conditioner, VSHW and VHW models.



EZ SERIES

## VF

Replacement for McQuay and Singer Water Source Heat Pumps.



EZ SERIES

## WC

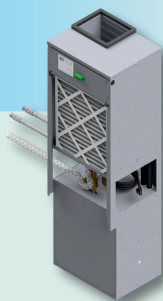
Replacement for Cool Heat Water Cooled Hydronic Heat.



EZ SERIES

## VH

Hybrid WSHP. Replacement for CGC Innkeeper & CGC Homekeeper WSHPs, Bulldog units, and new construction.



EZ SERIES

## WH

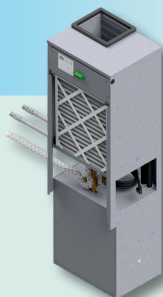
Replacement for Friedrich Climate Master WC and 800.



EZ SERIES

## VW

Replacement for CGC Innkeeper & CGC Homekeeper WSHPs, Bulldog units, and new construction.



EZ SERIES

## WM

Replacement for McQuay and Singer Water Source Heat Pumps.



# New Construction

EZ SERIES

## 42

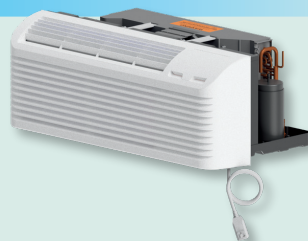
42" x 16" PTAC and PTHP.



EZ SERIES

## 4V

Inverter 42" 16" PTHP unit.



EZ SERIES

## 26

26" x 16" Thru-the-wall unit.



EZ SERIES

## GS

Natural or LP Gas Heat PTAC.



EZ SERIES

## MB

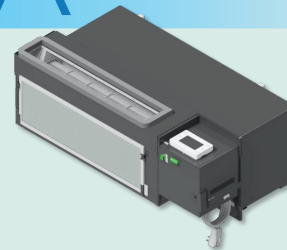
39.4" x 23.1" Monoblock (no external unit) air conditioner.



EZ SERIES

## LA

"Low Ambient" Series is our 42" x 16", new construction PTHP.



EZ SERIES

## LT

42" x 16" PTAC with STC and OITC Ratings.



EZ SERIES

## NY

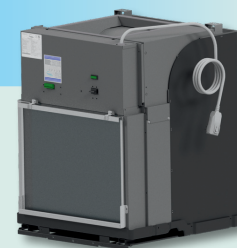
42" x 16" Hydronic PTAC unit.



EZ SERIES

## VA

Low ambient heat pump with variable refrigerant flow (VRF), rather than standard on/off operation.



EZ SERIES

## VV

Inverter Heat Pump designed and manufactured for new construction or for replacement for vertical terminal air conditioning units.





Original Model	Case Height	Case Width	Our Model
<b>Amana®</b>			
PT 42 x 16 Series	16	42	<b>42</b>
PB 26 x 16 Series	16	26	<b>26</b>
<b>American Air Filter®</b>			
Enersaver Type 16	16	37 1/2	<b>16</b>
Type 16 Hydronic	16	41 1/2	<b>16</b>
Nelsonaire Series 25	16	36 1/2	<b>25</b>
<b>American Standard®</b>			
TW Series Type 41	16	36 1/2	<b>41</b>
Type 40 Remotaire(SR)	16 1/2	37	<b>40</b>
<b>Applied Comfort®</b>			
DM/DMQ	18 5/16	32	<b>CS</b>
SC Series	16	40	<b>SC</b>
SC Series	16	36	<b>RM</b>
<b>Carrier®</b>			
51PH Wallmate	18 15/16	32	<b>CS</b>
<b>Cartaret®</b>			
Type 45	16 1/2	37	<b>45</b>
<b>Chromalox®</b>			
Space Command	16 1/2	45 1/8	<b>CH</b>
CAM (2 section)	15	35 1/2	<b>CX</b>
<b>Chrysler®</b>	15 1/2	36	<b>CY</b>
<b>Climate Master®</b>			
Climate Master Series 700AD	16	36	<b>AD</b>
Climate Master Series 701	16	40 1/2	<b>C7</b>
Climate Master - Series 702, 703 & 704	16	36	<b>CM</b>
<b>Comitale National®</b>	-	-	<b>ALL</b>
<b>Dunham Bush®</b>			
New Port III	25	52	<b>N3</b>
New Port IV	25	52	<b>N4</b>
<b>Embassy®</b>			
Weatherwin	16	36	<b>RM</b>
<b>Fedders®</b>			
Maxizone Series	16 1/4	27	<b>MX</b>
Unizone	16	48	<b>UN</b>
<b>Friedrich®</b>			
Climate Master Series 700AD	16	36	<b>AD</b>
Climate Master Series 701	16	40 1/2	<b>C7</b>
Climate Master Series - 702, 703 & 704	16	36	<b>CM</b>
ET Series	20	28	<b>ET</b>
TE Series	16	42	<b>TE</b>
Vert-I-Pak	32	23	<b>VP</b>
<b>General Electric®</b>			
Zonline	16	42	<b>42</b>
AJ Series	16	26	<b>26</b>
AZ Vertical	31	23 1/4	<b>VP</b>
<b>Heil Quaker®</b>			
SEA Series	14 1/2	35 7/8	<b>HQ</b>
SHA Series	14 1/2	35 7/8	<b>HQ</b>
Series C	18 5/16	32	<b>CS</b>
<b>Ice-Cap / Ice Air®</b>			
RSK Series	16	36	<b>RK</b>
RSCT Series	16	42	<b>RT</b>
RSWL Series	13 1/4	56 1/2	<b>WL</b>
<b>ITT Nesbitt®</b>			
Challenger Series	16 1/4	42 1/4	<b>NC</b>
Roomate Series - N	-	-	<b>CY</b>
Modular Roomate (MW)	-	-	<b>NR</b>

Original Model	Case Height	Case Width	Our Model
<b>Keeprite®</b>			
Climette	18 5/16	32	<b>CS</b>
Seasonall	18 5/16	32	<b>CS</b>
<b>Lennox®</b>			
PTEIA Series	22 1/4	38	<b>PT</b>
<b>McQuay®</b>			
C/EC	27 3/8	54 1/2	<b>EC</b>
EB Series	22	30 5/8	<b>EB</b>
J/EJ Series	14	30	<b>JA</b>
K, EK and RK Series	13 15/16	36	<b>KF</b>
Type EA, ES and RS	16 3/8	44 7/8	<b>ED</b>
Type NE	16	42	<b>NE</b>
<b>Mueller®</b>			
Climatrol	16	48	<b>UN</b>
<b>Remington®</b>			
J/EJ Series	14	30	<b>JA</b>
K, EK and RK Series	13 15/16	36	<b>KF</b>
Type 41	16	36 1/2	<b>41</b>
Type 45	16 1/2	37	<b>45</b>
<b>Retroaire®</b>	-	-	<b>ALL</b>
<b>Simonaire®</b>			
SSK	16	42	<b>RT</b>
SSEZ	16	42	<b>RT</b>
SSCT	16	42	<b>RT</b>
<b>Singer®</b>			
C/EC	27 3/8	54 1/2	<b>EC</b>
EB	22	30 5/8	<b>EB</b>
J/EJ Series	14	30	<b>JA</b>
K, EK and RK Series	13 15/16	36	<b>KF</b>
Type 41	16	36 1/2	<b>41</b>
Type 45	16 1/2	37	<b>45</b>
Type EA, ES and RS	16 3/8	44 7/8	<b>ED</b>
<b>Slant Fin®</b>			
JK	16	42	<b>JK</b>
CC Monterrey	16	42	<b>CC</b>
Monterrey	17 1/2	36	<b>FM</b>
<b>Suburban Dynaline®</b>			
Gas Unit	16	42	<b>GS</b>
<b>TPI®</b>			
Ra-Matic	16	36	<b>RM</b>
<b>Weil-Mclain®</b>			
Climate Master Series - 700AD	16	36	<b>AD</b>
Climate Master Series - 702, 703, & 704	16	36	<b>CM</b>
<b>Westinghouse®</b>			
RB Series	15	38 1/2	<b>RB</b>
<b>Worthington®</b>	16	48	<b>UN</b>
<b>Zoneaire®</b>			
CHP Series	18 5/6	32	<b>CS</b>
CSM Series	18 5/6	32	<b>CS</b>
Zoneaire, RM Series	16	36	<b>RM</b>
Zoneaire, SC Series	16	40	<b>SC</b>

**Custom Products**

- Vertical Units, Fan Coils, and other related HVAC products. (Consult with Factory)
- If you don't see the unit you're looking for in the above list, please call us about having a unit custom designed for you.
- Parts and accessories such as wall sleeves, room cabinets, hydronic coils, etc. are available.

Ask your salesman about  
our DR. PTAC option!\*



*\*100% conditioned  
fresh air*

## Vertical Unit Available

For New Construction and  
as Replacement for:

GE AZ Vertical and  
Friedrich Vert-I-Pak



500 Middle Country Road, St. James, NY 11780 • 1-800-886-2759  
e-mail: [sales@islandaire.com](mailto:sales@islandaire.com) • [www.islandaire.com](http://www.islandaire.com)  
Ph: 631-471-2900 • Fax: 631-471-2913



**Locally Represented By:**